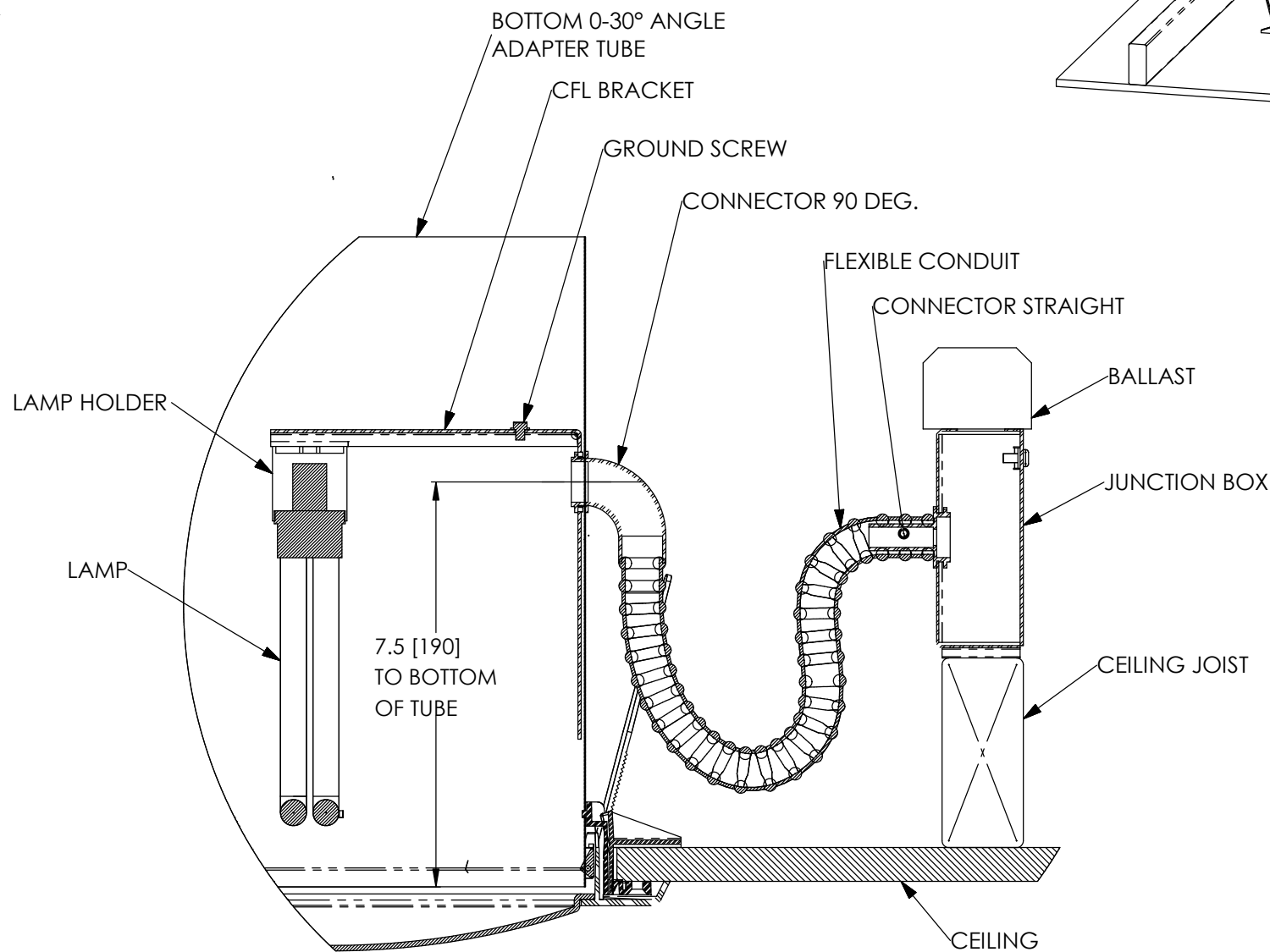
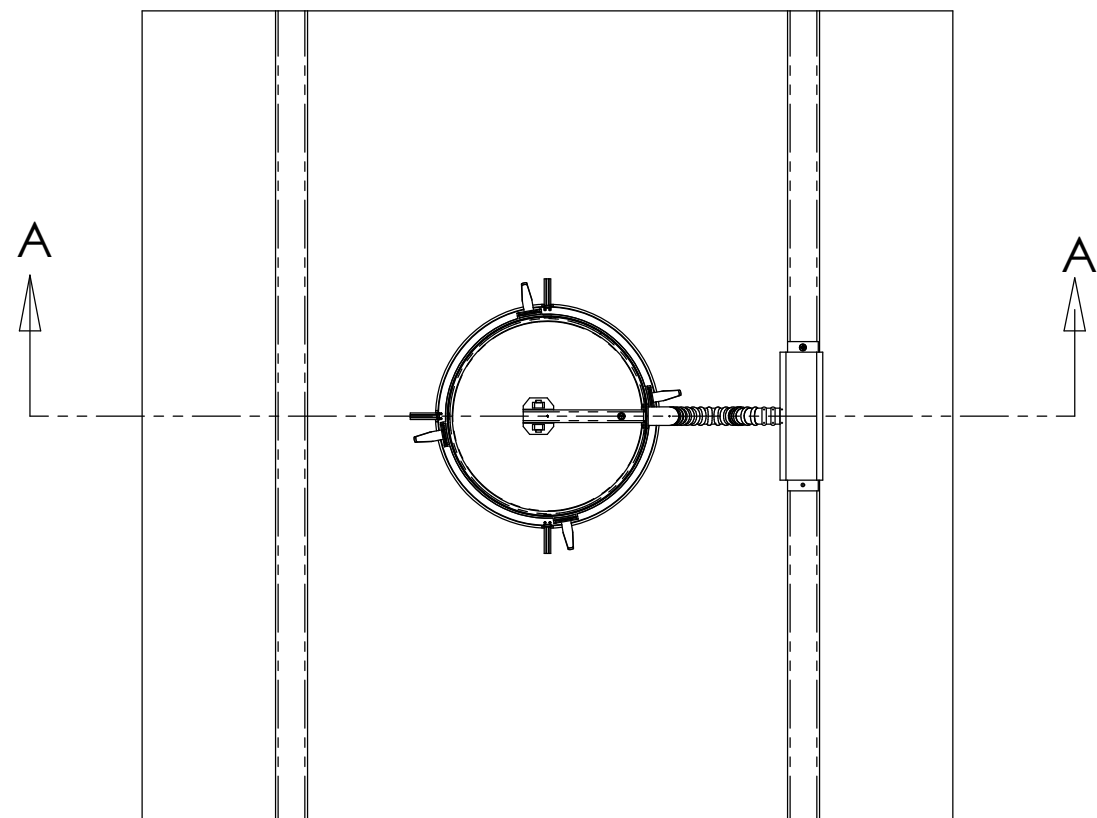
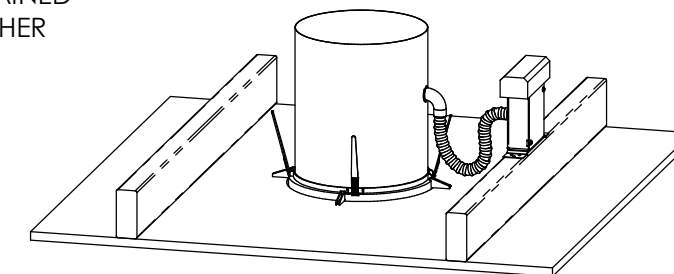


REVISIONS				
ECO	REV.	DESCRIPTION	DATE	INC.
	A	RELEASED	2/27/2004	

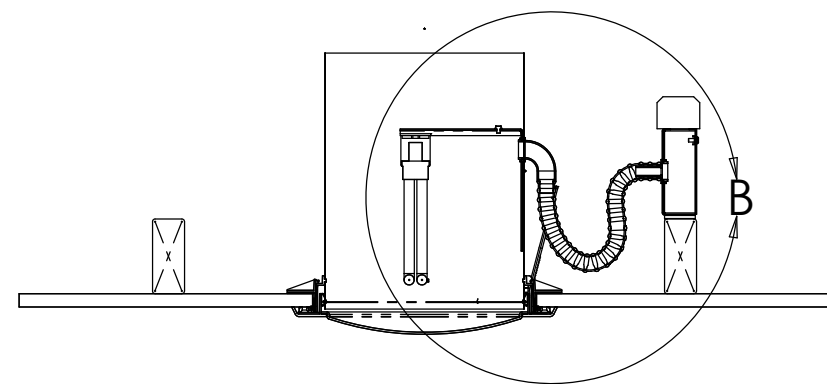
10" SOLATUBE COMPACT FLUORESCENT LIGHT HARD CEILING

NOTES:

1. DIMENSIONS IN BRACKETS ARE METRIC UNLESS OTHERWISE SPECIFIED.
2. 6" MINIMUM CLEARANCE SHOULD BE MAINTAINED FROM ALL SOLATUBE COMPONENTS AND OTHER PLENUM ELEMENTS.



**DETAIL B
SCALE 3 : 1**



**FULL SECTION A-A
SCALE 1:1**

UNLESS OTHERWISE SPECIFIED:		
DIMENSIONS ARE IN INCHES		
TOLERANCES:		
ANGULAR: $\pm 0.5^\circ$		
.X \pm .1		
.XX \pm .02		
MATERIALS \pm .005		

FINISH		

DO NOT SCALE DRAWING		

SOLATUBE INTERNATIONAL, INC. COPYRIGHT 2002 WWW.SOLATUBE.COM		
DRAWN BY STEVENS	DATE 2/23/04	
CHECKED BY	DATE	
APPROVED BY	DATE	

<p>2210 OAK RIDGE WAY VISTA, CALIFORNIA 92081-8341 PH (760) 597-4400</p>	
TITLE: 10" SOLATUBE COMPACT FLUORESCENT LIGHT	
SIZE: D	DWG. NO.: 10-HC-CFL
SCALE: 1:1	REV: A
SHEET 1 OF 1	